



Realtors • Auctioneers • Advisors

AUCTION

LEADING THE INDUSTRY SINCE 1945

SATURDAY - OCTOBER 17, 2020 – 10:30AM

ATTN: Land Seekers – Hunters – Nature Lovers – Investors
206 ACRES WOODED LAND

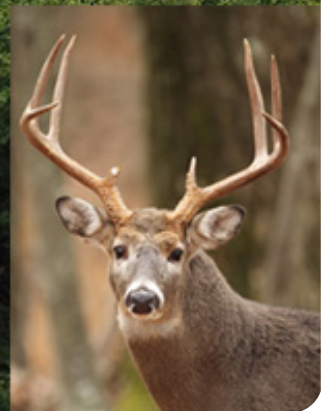
To Be Offered In 9 Parcels Then As Entirety

MECHANIC TWP. – HOLMES CO. – EAST HOLMES SCHOOL DISTRICT
Online and On-Site Bidding Available

ABSOLUTE AUCTION, all sells to the highest bidder(s). LOCATION:

Corner of TR-407 and TR-122, Millersburg, OH 44654

Directions: Take US RT-62/SR-39 just west of Berlin, OH to SR-557 then south 1.4 miles to TR-407, turn right (west), go 2.9 miles to TR-122. Watch for KIKO signs.



Information is believed to be accurate but not guaranteed. KIKO Auctioneers

800-533-5456 | kikoauctions.com



Exciting real estate opportunity presents 206 acres wooded rolling land, nature trails, timber potential, future home or cabin sites, gas and oil rights transfer – convenient location. Land is an investment you can enjoy! The Millers have owned this property for 52 years! Located in scenic Holmes County - Convenient location to Cleveland, Akron, Canton and Dover/New Philadelphia.

Land to be offered bidder's choice as follows:

Parcel #1: 10.4 acres wooded – approx. 560 ft frontage

Parcel #2: 30.2 acres wooded – approx. 1,390 ft frontage

Parcel #3: 92.9 acres wooded – oil well driveway will get you to the highest point. Plenty of road frontage. Hunter's paradise. Approx. 1,950 ft frontage

Parcel #4: 8 acres wooded – approx. 400 ft frontage

Parcel #5: 8.1 acres wooded – approx. 400 ft frontage

Parcel #6: 8.1 acres wooded – approx. 420 ft frontage

Parcel #7: 8.1 acres wooded corner parcel – approx. 1,900 ft frontage

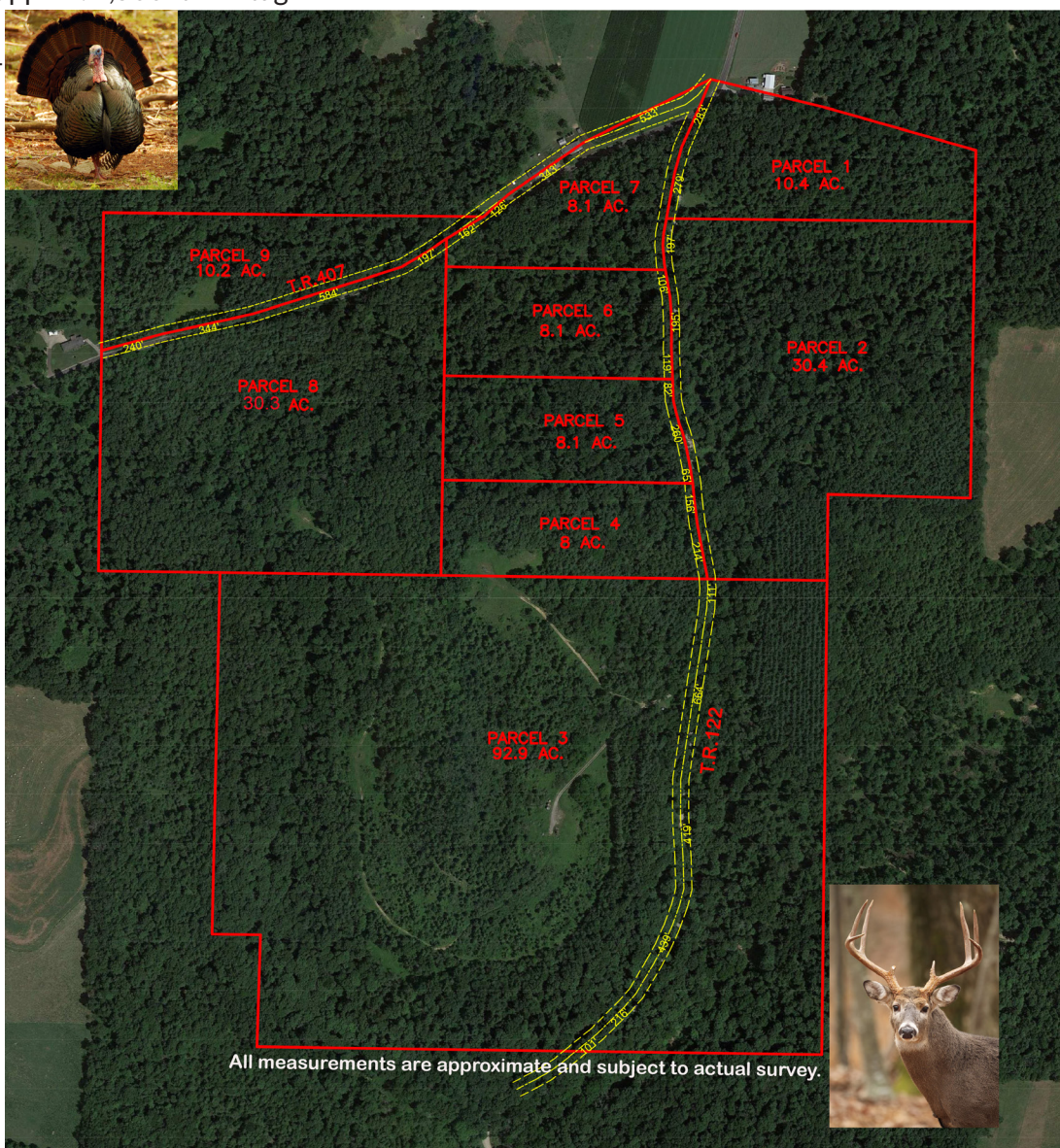
Parcel #8: 30.3 acres wooded – approx. 1,360 ft frontage

Parcel #9: 10.2 acres wooded – approx. 1,500 ft frontage

NOTE: All acreages and frontages are approximate and subject to actual survey. Parcels will be offered separate then together and sell the way it brings the most. Walk land at your convenience. The actual auction site will be well marked auction day. Bank financing available to qualified bidders.

TERMS ON REAL ESTATE: 10% down auction day, balance due at closing. A 10% buyer's premium will be added to the highest bid to establish the purchase price. Any desired inspections must be made prior to bidding. All information contained herein was derived from sources believed to be correct. Information is believed to be accurate but not guaranteed. Call today to have a map mailed directly to you or visit www.kikoauctions.com.

Auction By Order Of: John P. Miller Trust, PNC Bank Trustee



Auctioneer/Realtor®
PETER R. KIKO SR.
330-705-5996
peter@kikocompany.com



Apprentice Auctioneer/Realtor®
KRISTEN KIKO
330-234-7110
kristen@kikocompany.com



Apprentice Auctioneer/Realtor®
PETE KIKO JR.
330-749-7898
pkiko@kikocompany.com

800-533-5456 | kikoauctions.com

